



NAMASTE INDIA

...an initiative to support Indian handicrafts



Bells



Item Code : GKCL38

7"(H)X3.5"(W)X1"(L) Weight: 0.33 gms



Item Code : GKCL24

6.5"(H)X7.5"(W)X1"(L) Weight: 0.118 gms



Item Code : GKCL42

2.6"(H)X5.4"(W)X1"(L) Weight: 0.48 gms



Item Code : GKCL25

5.5"(H)X6.1"(W)X1"(L) Weight: 0.84 gms



Item Code : GKCL32

6.5"(H)X5.5"(W)X1"(L) Weight: 0.45 gms



Item Code : GKCL29

8.5"(H)X4.5"(W)X1"(L) Weight: 0.77 gms



Item Code : GKCL34

6.2"(H)X4.11"(W)X1"(L) Weight: 0.35 gms



Item Code : GKCL47

9.5"(H)X5.1"(W)X5.1"(L) Weight: 0.171 gms



Item Code : GKCL5

13"(H)X3.5"(W)X3.5"(L) Weight: 0.192 gms



Item Code : GKCL28

7.5"(H)X5.5"(W)X1"(L) Weight: 0.83 gms



Item Code : GKCL31

6"(H)X4.5"(W)X1"(L) Weight: 0.64 gms



Item Code : GKCL35

6.5"(H)X3.1"(W)X1"(L) Weight: 0.37 gms



Item Code : GKCL39

4"(H)X2"(W)X1"(L) Weight: 0.21 gms



Item Code : GKCL14

11"(H)X9.5"(W)X6"(L) Weight: 0.872 gms



Brass



Item Code : UJM203

8"(H)X7.2"(W)X2.2"(L) Weight: 0.964 gms



Item Code : UJM84

15"(H)X8.9"(W)X4.2"(L) Weight: 2.92 kg



Item Code : UJM217

15"(H)X10"(W)X5"(L) Weight: 1.78 kg



Item Code : UJM245

4"(H)X5.3"(W)X2.4"(L) Weight: 0.955 gms



Item Code : UJM63

5"(H)X5"(W)X2.5"(L) Weight: 1.337 kg



Item Code : UJM218

9"(H)X6.5"(W)X2.5"(L) Weight: 1.215 kg



Item Code : UJM288

0.5"(H)X4"(W)X5.7"(L) Weight: 0.399 gms



Item Code : UJM236

2"(H)X2.6"(W)X2.6"(L) Weight: 0.70 gms



Item Code : UJM254

5"(H)X2.5"(W)X2.5"(L) Weight: 0.218 gms



Item Code : UJM36

6"(H)X6"(W)X13"(L) Weight: 3.483 kg



Item Code : UJM273

6.5"(H)X6.5"(W)X3.5"(L) Weight: 1.863 kg



Item Code : UJM168

1.7"(H)X1.6"(W)X7.5"(L) Weight: 0.888 gms



Item Code : UJM238

4.2"(H)X8.5"(W)X2"(L) Weight: 0.797 gms



Item Code : UJM246

6.4"(H)X9.6"(W)X6.4"(L) Weight: 1.688 kg



Item Code : UJM289

2.5"(H)X5.7"(W)X9.5"(L) Weight: 879 gms



Item Code : UJM282

5.2"(H)X4"(W)X4"(L) Weight: 0.394 gms



Item Code : UJM22

5.3"(H)X3.7"(W)X3.2"(L) Weight: 1.30 kg



Item Code : UJM6

12.2"(H)X4.3"(W)X3.3"(L) Weight: 2.688 kg



Item Code : UJM262

10.5"(H)X4.5"(W)X1"(L) Weight: 1.24 kg



Item Code : UJM169

2.4"(H)X2.5"(W)X2.5"(L) Weight: 0.026 gms



Item Code : UJM170

13"(H) X 3.5"(W) X 2.7"(L) Weight : 2.252 kg



Item Code : UJM290

9"(H) X 3.2"(W) X 3.2"(L) Weight : 1kg



Item Code : UJM262

4.7"(H) X 3.7"(W) X 2.2"(L) Weight : 0.224 gms



Item Code : UJM271

10"(H) X 3.6"(W) X 2.3"(L) Weight : 1.365 kg



Item Code : UJM22

4"(H) X 3.2"(W) X 3.2"(L) Weight : 0.079 gms



Item Code : UJM22

5.5"(H) X 3.5"(W) X 3"(L) Weight : 1.26 kg



Item Code : UJM162

28.5"(H) X 7.95"(W) X 9.5"(L) Weight : 4.70 kg



Item Code : UJM268

21"(H) X 3.5"(W) X 1.2"(L) Weight : 1.021 kg



Item Code : UJM155

26"(H) X 7"(W) X 7"(L) Weight : 2.5 kg



Item Code : UJM136

37"(H) X 10"(W) X 10"(L) Weight : 5.40 kg



Item Code : UJM17

5.5"(H) X 4.5"(W) X 3.1"(L) Weight : 1.445 kg



Item Code : UJM285

13.5"(H) X 3.1"(W) X 3.1"(L) Weight : 2.58 kg



Item Code : UJM15

6.8"(H) X 5.5"(W) X 3.6"(L) Weight : 1.895 kg



Item Code : UJM64

7.2"(H) X 6.2"(W) X 2.2"(L) Weight : 2.00 kg



Item Code : UJM17

6.5"(H) X 3.8"(W) X 3.6"(L) Weight : 1.45 kg



Item Code : UJM13

7.6"(H) X 4.6"(W) X 2.4"(L) Weight : 1.632 kg



Item Code : UJM4

10.6"(H) X 6.7"(W) X 5.1"(L) Weight : 2.150 kg



Item Code : UJM89

7"(H) X 7.3"(W) X 5.7"(L) Weight : 2.450 kg



Item Code : UJM99

6"(H) X 4"(W) X 6.2"(L) Weight : 0.888 gms



Item Code : UJM166

9"(H) X 6.2"(W) X 3.1"(L) Weight : 1.414 kg



Item Code : UJM91

7.5"(H) X 3.2"(W) X 3.2"(L) Weight : 0.477 gms



Item Code : UJM261

7"(H) X 3.2"(W) X 3.2"(L) Weight : 0.356 gms

Embossed Wood



Item Code : JDAC23

4.2'(H) X 10'(W) X 5.5'(L) Weight: 0.269 gms



Item Code : JDAC459

14.5'(H) X 9.5'(W) X 8'(L) Weight: 0.826 gms



Item Code : JDAC376

11'(H) X 14'(W) X 0.5'(L) Weight: 0.306 gms



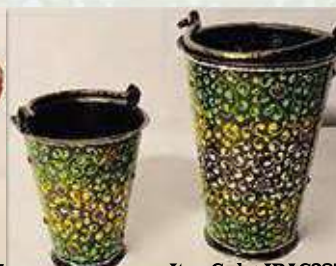
Item Code : JDAC446

1.5'(H) X 8.5'(W) X 15'(L) Weight: 0.432 gms



Item Code : JDAC387

7.1'(H) X 9.5'(W) X 3.7'(L) Weight: 0.198 gms



Item Code : JDAC387

5'(H) X 4.5'(W) X 4.5'(L) Weight: 0.348 gms



Item Code : JDAC441

6.5'(H) X 7'(W) X 7'(L) Weight: 0.370 gms



Item Code : JDAC400

2'(H) X 9'(W) X 9'(L) Weight: 0.456 gms



Item Code : JDAC387

9'(H) X 8.2'(W) X 3.6'(L) Weight: 0.661 gms



Item Code : JDAC334

13'(H) X 4.5'(W) X 8'(L) Weight: 1.375 kg



Item Code : JDAC443

7.5'(H) X 4.5'(W) X 4.5'(L) Weight: 0.365 gms



Item Code : JDAC431

12.5'(H) X 11'(W) X 3.5'(L) Weight: 1.816 kg



Item Code : JDAC91

6.5'(H) X 4'(W) X 0.5'(L) Weight: 0.145 gms



Item Code : JDAC138

10'(H) X 13'(W) X 3'(L) Weight: 0.743 gms



Item Code : JDAC146

9'(H) X 10'(W) X 7.5'(L) Weight: 0.968 gms



Item Code : JDAC218

8.5'(H) X 5'(W) X 3.2'(L) Weight: 0.346 kg



Item Code : JDAC18

2'(H) X 12'(W) X 4'(L) Weight: 0.440 gms



Item Code : JDD003

5.5'(H) X 21'(W) X 7'(L) Weight: 1.746 kg



Item Code : JDMA9

7.5'(H) X 20.5'(W) X 6.5'(L) Weight: 1.414 kg



Item Code : JDAC380

8.5'(H) X 10'(W) X 3.5'(L) Weight: 2.758 kg



Item Code : JDAC415
9'(H) X 14'(W) X 5.5'(L) Weight : 1.821 gms



Item Code : JDAC371
2'(H) X 13.5'(W) X 10'(L) Weight : 0.726 gms



Item Code : JDAC28
9'(H) X 7.5'(W) X 2.7'(L) Weight: 0.899 gms



Item Code : JDAC105
3'(H) X 4'(W) X 4'(L) Weight: 0.366 gms



Item Code : JDAC228
1.2'(H) X 12'(W) X 3.5'(L) Weight: 0.366 gms



Item Code : JDAC454
9'(H) X 9.5'(W) X 9.5'(L) Weight: 1.619 kg



Item Code : JDAC162
3'(H) X 8'(W) X 8'(L) Weight: 0.699 gms



Item Code : JDAC239
5'(H) X 10.5'(W) X 3.5'(L) Weight: 0.398 gms



Item Code : JDAC181
1.5'(H) X 10.5'(W) X 6.5'(L) Weight: 0.381 gms



Item Code : JDNAC1
7.5'(H) X 8'(W) X 3.5'(L) Weight: 0.456 gms



Item Code : JDAC1
4'(H) X 4'(W) X 0.5'(L) Weight: 0.100 gms



Item Code : JDAC79
2'(H) X 7.4'(W) X 4.5'(L) Weight: 0.297 gms



Item Code : JDMA19
8'(H) X 7'(W) X 7'(L) Weight: 0.717 kg



Item Code : JDAC240
6.5'(H) X 6'(W) X 2.5'(L) Weight: 0.494 gms



Item Code : JDAC234
9.5'(H) X 6.2'(W) X 2.2'(L) Weight: 0.248 gms



Item Code : JDAC1
15'(H) X 19.5'(W) X 3'(L) Weight: 1.454 kg



Item Code : JDAC1
19'(H) X 10'(W) X 4'(L) Weight: 0.798 gms



Item Code : JDAC5
4.5'(H) X 9'(W) X 2.5'(L) Weight: 0.316 gms



Item Code : JDAC377
24'(H) X 6.5'(W) X 6.5'(L) Weight: 1.798 kg



Item Code : JDAC398
6.5'(H) X 10'(W) X 10'(L) Weight: 1.546 kg



Item Code : JDAC178
1.5'(H) X 13.5'(W) X 13.5'(L) Weight: 0.654 gms



Item Code : JDAC476
37'(H) X 11.5'(W) X 11.5'(L) Weight: 1.600 gms



Item Code : JDAC87
8'(H) X 7'(W) X 2'(L) Weight : 0.795 gms



Item Code : JDAC144
8'(H) X 11'(W) X 2'(L) Weight : 0.255 gms



Item Code : JDAC216
11'(H) X 6'(W) X 6'(L) Weight : 0.294 gms



Item Code : JDAC184
3.5'(H) X 11.5'(W) X 6.7'(L) Weight : 1.109 kg



Item Code : JDAC142
7.5'(H) X 4'(W) X 2'(L) Weight : 0.064 gms



Item Code : JDAC52
12.5'(H) X 7'(W) X 3.7'(L) Weight : 1.884 kg



Item Code : JDMA11
4.5'(H) X 7'(W) X 7'(L) Weight : 1.343 kg



Item Code : JDAC232
2'(H) X 9.7'(W) X 8.7'(L) Weight : 0.892 gms



Item Code : JDAC6
10'(H) X 8'(W) X 0.5'(L) Weight : 0.476 gms



Item Code : JDAC32
11'(H) X 8'(W) X 3.5'(L) Weight : 1.426 kg



Item Code : JDMA34
5'(H) X 18'(W) X 4.5'(L) Weight : 0.720 gms



Item Code : JDMA241
10'(H) X 14.5'(W) X 5'(L) Weight : 1.086 kg



Item Code : JDMA16
10'(H) X 8.5'(W) X 1'(L) Weight : 0.572 gms



Item Code : JDMA58
10'(H) X 6.5'(W) X 5.7'(L) Weight : 2.452 kg



Item Code : JDAC211
17.8'(H) X 11.8'(W) X 2'(L) Weight : 1.124 kg



Item Code : JDACT11
17.8'(H) X 17.8'(W) X 2'(L) Weight : 1.924 kg



Item Code : JDAC221
17.5'(H) X 17.5'(W) X 1.5'(L) Weight : 2.087 kg



Item Code : JDMA224
11'(H) X 8'(W) X 5'(L) Weight : 2.642 kg



Item Code : JDAC210
11.5'(H) X 11.5'(W) X 2'(L) Weight : 1.105 kg



Item Code : JDAC226
12'(H) X 17.5'(W) X 1.5'(L) Weight : 1.335 kg



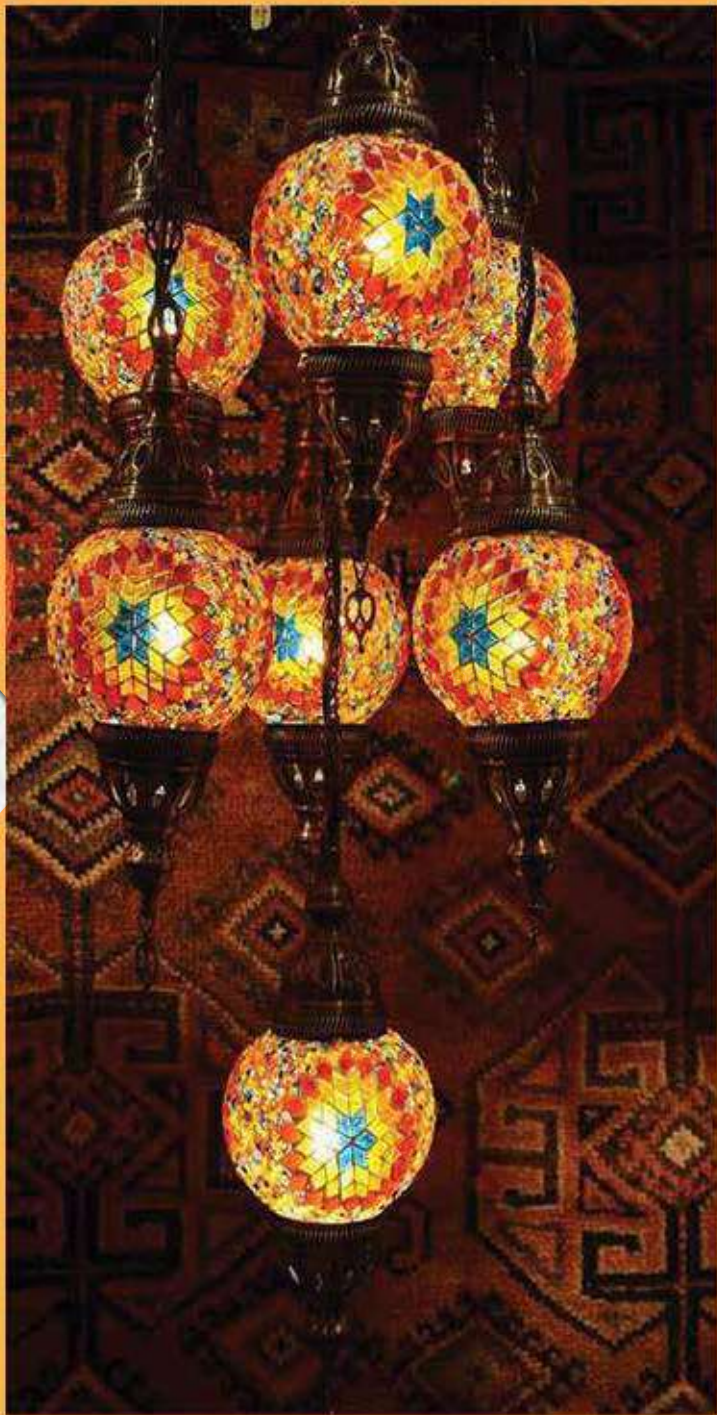
Item Code : JDAC242
9.5'(H) X 9'(W) X 3'(L) Weight : 3.122 kg



Item Code : JDAC386
30'(H) X 8.5'(W) X 14'(L) Weight : 4.432 kg



ਹੋਲਣ ਵੇਦਰ



LAMPS



Item Code : UNLGD25
14.2"(H) X 16"(W) X 16"(L) Weight : 1.72 kg



Item Code : UNLGD65
10"(H) X 16.5"(W) X 16"(L) Weight : 1.61 kg



Item Code : UNLGD21
16"(H) X 14.5"(W) X 14"(L) Weight : 2.03 kg



Item Code : UNLGD56
13"(H) X 17"(W) X 17"(L) Weight : 2.39 kg



Item Code : UNLGD30
7.2"(H) X 5.6"(W) X 5.6"(L) Weight : 0.578 gms



Item Code : JGHU69
13"(H) X 14.5"(W) X 14.5"(L) Weight : 1.75 kg



Item Code : JGHU69
10"(H) X 4"(W) X 4"(L) Weight : 0.484 gms



Item Code : UA038
11"(H) X 15"(W) X 15"(L) Weight : 1.63 kg



Item Code : UNLGD52
8.9"(H) X 11.5"(W) X 11.5"(L) Weight : 0.872 gms



Item Code : UNLGD30
7.5"(H) X 5"(W) X 5"(L) Weight : 0.599 gms



Item Code : UNLGD46
6.5"(H) X 8"(W) X 8"(L) Weight : 0.546 gms



Item Code : UA042
17"(H) X 6"(W) X 6"(L) Weight : 2.98 kg



Item Code : UNLGD51
8"(H) X 5.7"(W) X 5.7"(L) Weight : 0.890 kg



Item Code : UNLGD62
14"(H) X 11"(W) X 11"(L) Weight : 3.09 kg



Item Code : UNLGD27
11"(H) X 9.5"(W) X 9.5"(L) Weight : 1.42 kg



Item Code : UA023
11"(H) X 6.5"(W) Weight : 1.09 kg



Item Code : UA010
9"(H) X 5.5"(W) X 5.5"(L) Weight : 0.439 gms



Item Code : UNLGD10
13.5"(H) X 3"(W) X 3"(L) Weight : 0.281 gms



Item Code : UA010
11.5"(H) X 8"(W) X 8"(L) Weight : 0.800 gms



Item Code : UNLGD27
10.5"(H) X 16.5"(W) X 16.5"(L) Weight : 1.32 kg



Item Code : UAO3

10'(H) X 6'(W) Weight : 0.193 gms



Item Code : UNLGD72

10'(H) X 13.6'(W) Weight : 1.44 kg



Item Code : UNLGD19

11.6'(H) X 5.5'(W) Weight : 1.34 kg



Item Code : UAO25

12.2'(H) X 11.4'(W) Weight : 1.10 kg



Item Code : UAO4

8.2'(H) X 7.7'(W) Weight : 0.278 gms



Item Code : UNLGD13

5.6'(H) X 8'(W) Weight : 1.12 kg



Item Code : UAO30

11.5'(H) X 6'(W) Weight : 1.11 kg



Item Code : UAO5

3'(H) X 10'(W) Weight : 1.06 kg



Item Code : UNLGD66

15'(H) X 5.5'(W) Weight : 2.48 kg



Item Code : UNLGD15

6'(H) X 10'(W) Weight : 1.04 kg



Item Code : UNLGD14

8'(H) X 12'(W) Weight : 1.95 kg



Item Code : UNLGD50

7'(H) X 3.2'(W) Weight : 0.646 gms



Item Code : UAO35

13.7'(H) X 4.2'(W) Weight : 2.49 kg



Item Code : UNLGD13

6'(H) X 8'(W) Weight : 1.48 kg



Item Code : UNLGD50

7'(H) X 5.5'(W) Weight : 0.647 gms



Item Code : ADCR6

9'(H) X 5'(W) X 5'(L) Weight : 0.200 gms



Item Code : ADCR4

17'(H) X 6'(W) X 6'(L) Weight : 0.347 gms



Item Code : ADCR7

6.2'(H) X 5.2'(W) X 5.2'(L) Weight : 0.173 gms



Item Code : ADCR5

13'(H) X 6.4'(W) X 6.4'(L) Weight : 0.316 gms



Item Code : ADCR11

6'(H) X 5'(W) X 5'(L) Weight : 0.154 gms



Item Code : ADCR6

9'(H) X 5.5'(W) X 5.5'(L) Weight : 0.210 gms



Item Code : ADCR9

13'(H) X 8.2'(W) X 8.2'(L) Weight : 0.278 gms

Marble





Item Code : JPH61

2.8'(H) X 12'(W) X 6'(L) Weight: 1.45 kg



Item Code : JPH77

2'(H) X 3.3'(W) X 3.3'(L) Weight: 0.102 gms



Item Code : JPH68

4.5'(H) X 10'(W) X 2.2'(L) Weight: 1.29 kg



Item Code : JPH71

3.5'(H) X 6.7'(W) X 2.2'(L) Weight: 0.824 gms



Item Code : JPH44

2.6'(H) X 5.4'(W) X 1'(L) Weight: 0.268 gms



Item Code : JPH89

2.7'(H) X 5.5'(W) X 5.5'(L) Weight: 0.600 gms



Item Code : JPH19

5.7'(H) X 6.6'(W) X 1.2'(L) Weight: 0.271 gms



Item Code : JPMA22

10'(H) X 6'(W) X 0.5'(L) Weight: 0.847 gms



Item Code : DLS27

5'(H) X 3'(W) X 3'(L) Weight: 0.450 gms



Item Code : DLS20

4.5'(H) X 8.5'(W) X 3'(L) Weight: 1.33 kg



Item Code : JPH7

3'(H) X 3.3'(W) X 2.3'(L) Weight: 0.310 gms



Item Code : JPMA74

6'(H) X 3.4'(W) X 3.4'(L) Weight: 0.502 gms



Item Code : JPMA236

6.7'(H) X 8.3'(W) Weight: 2.45 kg



Item Code : JPMA239

6'(H) X 6.2'(W) X 2.8'(L) Weight: 0.925 gms



Item Code : JPMA238

6.2'(H) X 7.5'(W) X 2.8'(L) Weight: 1.46 kg



Item Code : JPMA183

4.5'(H) X 11.5'(W) X 3.2'(L) Weight: 1.60 kg



Item Code : JPMA72

2'(H) X 4'(W) X 4'(L) Weight: 0.233 gms



Item Code : JPMA169

2'(H) X 9.5'(W) X 9.9'(L) Weight: 1.23 gms



Item Code : JPMA231

2'(H) X 5.5'(W) X 5.5'(L) Weight: 0.429 gms



Item Code : JPMA179

0.5'(H) X 4'(W) X 4'(L) Weight: 0.330 gms



Item Code : JPMA49

4.2'(H) X 3.5'(W) X 0.5'(L) Weight: 0.284 gms



Item Code : JPMA160

1.6'(H) X 5.2'(W) X 2'(L) Weight: 0.729 gms



Item Code : JPMA186

3'(H) X 6.5'(W) X 6.5'(L) Weight: 0.694 gms



Item Code : JPMA181

2.2'(H) X 8.2'(W) Weight: 1.75 kg



Item Code : JPMA86

4.2'(H) X 10.2'(W) X 10.2'(L) Weight: 1.787 kg



Item Code : JPMA88

1.5'(H) X 12'(W) X 9'(L) Weight: 2.957 kg



Item Code : JPMA43

2.2'(H) X 9'(W) X 5.6'(L) Weight: 1.422 kg



Item Code : JPMA43

2.2'(H)X.9'(W)X.6'(L) Weight: 1.422 kg



Item Code : JPMA80

2.5'(H)X.9'(W) Weight: 1.09 kg



Item Code : JPH81

16.5'(H)X 16.5'(W)X'(L) Weight: 2.258 kg



Item Code : JPH73

2'(H)X.2'(W)X.2'(L) Weight: 0.124 gms



Item Code : JPMA90

9'(H)X.2.6'(W)X.2'(L) Weight: 0.748 gms



Item Code : JPH77

1.3'(H)X.3.2'(W)X.3.2'(L) Weight: 0.102 gms



Item Code : JPMA83

3.2'(H)X.5'(W)X.5'(L) Weight: 0.542 gms



Item Code : JPH76

4'(H)X.3.2'(W)X.3.2'(L) Weight: 0.542 gms



Item Code : JPMA119

3.6'(H)X.3.6'(W)X.3.6'(L) Weight: 0.288 gms



Item Code : JPMA148

10'(H)X.6.5'(W)X.3.7'(L) Weight: 1.65 kg



Item Code : JPMA170

14'(H)X.6'(W)X.6'(L) Weight: 3.255 kg



Item Code : JPMA63

4'(H)X.5.7'(W)X.4'(L) Weight: 0.642 gms



Item Code : JPMA125

6.5'(H)X.6.7'(W)X.0.5'(L) Weight: 0.352 gms



Item Code : JPMA70

4.6'(H)X.5.6'(W)X.2.1'(L) Weight: 0.520 gms



Item Code : JPMA40

2'(H)X.12'(W)X.12'(L) Weight: 3.593 kg



Item Code : JPH72

3.6'(H)X.3.6'(W)X.0.5'(L) Weight: 0.366 gms



Item Code : GPH50

12'(H)X.9.5'(W)X.5'(L) Weight: 9.537 kg



Item Code : JPMA132

1'(H)X.1.8'(W)X.1.8'(L) Weight: 0.44 gms



Item Code : JPMA153

9.5'(H)X.8.9'(W)X.2.7'(L) Weight: 1.56 kg



Item Code : JPMA30

1'(H)X.4.2'(W)X.2.7'(L) Weight: 0.342 kg



Item Code : JBMA61

4'(H)X.6.4'(W)X.6.4'(L) Weight: 0.318 gms



Item Code : JPH45

12'(H)X.6'(W)X.6'(L) Weight: 1.25 kg



Item Code : JPH69

6.2'(H)X.3.2'(W)X.3.2'(L) Weight: 0.416 gms



Item Code : JPMA52

7'(H)X.4.3'(W)X.3'(L) Weight: 0.608 gms



Item Code : JPMA122

8.5'(H)X.6.6'(W)X.4'(L) Weight: 1.308 kg



Item Code : JPMA68

10.2'(H)X.9.2'(W)X.1'(L) Weight: 0.952 gms



Item Code : JPH45

3.5'(H)X.2.8'(W)X.1.6'(L) Weight: 0.147 gms



Item Code : UME70
1.5'(H) X 4'(W) X 3.1'(L) Weight : 0.332 gms



Item Code : JPMA163
12'(H) X 4.7'(W) X 4.7'(L) Weight : 1.994 kg



Item Code : UME50
2.5'(H) X 4.5'(W) X 4.5'(L) Weight : 0.451 gms



Item Code : UME71
4'(H) X 2'(W) X 2'(L) Weight : 0.26 gms



Item Code : JPMA79
11.5'(H) X 7'(W) X 7'(L) Weight : 2.840 kg



Item Code : UME41
5.5'(H) X 2'(W) X 2.8'(L) Weight : 0.22 gms



Item Code : UMES
2'(H) X 4'(W) X 2'(L) Weight : 0.644 gms



Item Code : UME35
5'(H) X 6.5'(W) X 4.2'(L) Weight : 0.74 gms



Item Code : UME45
4'(H) X 4.5'(W) X 2'(L) Weight : 0.58 gms



Item Code : UMES
2.1'(H) X 6'(W) X 2'(L) Weight : 0.844 gms



Item Code : UME76
1'(H) X 10'(W) X 10'(L) Weight : 0.776 gms



Item Code : UME55
2'(H) X 6'(W) X 4'(L) Weight : 0.78 gms



Item Code : UME47
7'(H) X 7'(W) X 2'(L) Weight : 1.62 kg



Item Code : UMES2
2'(H) X 5'(W) Weight : 0.845 gms



Item Code : UME33
3.5'(H) X 5'(W) X 3.5'(L) Weight : 0.32 gms



Item Code : UME46
5'(H) X 6.2'(W) X 2.8'(L) Weight : 0.72 gms



Item Code : UME71
4'(H) X 2'(W) X 2'(L) Weight : 0.24 gms

Traditional wood





Item Code : USFB256

1.5'(H)X0.5'(W)X3.5'(L) Weight: 0.013 gms



Item Code : USF31

0.5'(H)X3'(W)X6.7'(L) Weight: 0.092 gms



Item Code : USF31

0.5'(H)X3'(W)X6.7'(L) Weight: 0.118 gms



Item Code : USFB212

1'(H)X1.5'(W)X5'(L) Weight: 0.28 gms



Item Code : USF84

2.2'(H)X4'(W)X6'(L) Weight: 0.350 gms



Item Code : USF37

3'(H)X4'(W)X4'(L) Weight: 0.350 gms



Item Code : USF30

6'(H)X3.5'(W)X5'(L) Weight: 0.330 gms



Item Code : USWA393

4'(H)X2.6'(W)X3.0'(L) Weight: 0.135 gms



Item Code : USFB257

1'(H)X1.5'(W)X1.5'(L) Weight: 0.10 gms



Item Code : USF90

7'(H)X1.7'(W)X1'(L) Weight: 0.035 gms



Item Code : USFB152

1'(H)X7.5'(W)X9.5'(L) Weight: 0.282 gms



Item Code : USF57

3.5'(H)X3.2'(W)X4.3'(L) Weight: 0.150 gms



Item Code : USF56

3'(H)X3'(W)X6'(L) Weight: 0.113 gms



Item Code : USF7

9.5'(H)X6.5'(W)X13.5'(L) Weight: 1.165 kg



Item Code : USF118

1'(H)X1'(W)X1'(L) Weight: 0.013 gms



Item Code : USWA409

0.3'(H)X3.5'(W)X15'(L) Weight: 0.067 gms



Item Code : USF159

13'(H)X4'(W)X4'(L) Weight: 0.516 gms



Item Code : USFB155

0.5'(H)X2.5'(W)X14'(L) Weight: 0.073 gms



Item Code : USFB154

0.5'(H)X3'(W)X13'(L) Weight: 0.101 gms



Item Code : USF19

0.5'(H)X3'(W)X3'(L) Weight: 0.015 gms



Item Code : USF121

0.2'(H)X1'(W)X1.8'(L) Weight: 0.008 gms



Item Code : USWA446

3'(H)X4.5'(W)X8'(L) Weight: 0.366 gms



Item Code : USF70

3'(H)X1'(W)X6'(L) Weight: 0.196 gms



Item Code : USFB169

0.3'(H)X2'(W)X10.5'(L) Weight: 0.036 gms



Item Code : USWA409

0.3'(H)X3.5'(W)X15'(L) Weight: 0.063 gms



Item Code : USF118

0.5'(H)X1'(W)X1'(L) Weight: 0.006 gms



Item Code : USWA298

0.5'(H)X1'(W)X3'(L) Weight: 0.009 gms



Item Code : USWA20

10'(H)X2'(W)X2'(L) Weight: 0.065 gms



Item Code : UCAC20

6'(H)X6'(W)X8.2'(L) Weight: 0.931 gms



Item Code : USAS17

12.5'(H)X5'(W)X5'(L) Weight: 0.787 gms



Item Code : USAS11

27'(H)X6'(W)X6'(L) Weight: 1.400 gms



Item Code : USF143

2'(H)X2'(W)X12'(L) Weight: 0.228 gms



Item Code : USF35

2'(H)X9'(W)X9'(L) Weight: 0.772 gms



Item Code : USF13

4.5'(H)X4'(W)X10'(L) Weight: 0.798 gms



Item Code : USWA407

1'(H)X4'(W)X1'(L) Weight: 0.015 gms



Item Code : USFB49

6'(H)X8.5'(W)X15'(L) Weight: 0.435 gms



Item Code : USWA46

21'(H)X4'(W)X15'(L) Weight: 0.625 gms



Item Code : USFB111

0.5'(H)X7.5'(W)X14'(L) Weight: 0.317 gms



Item Code : UCAC23

0.3'(H)X2'(W)X6'(L) Weight: 0.021 gms



Item Code : USF114

0.5'(H)X0.5'(W)X6'(L) Weight: 0.012 gms



Item Code : USF36

5.5'(H)X10'(W)X10'(L) Weight: 1.340 kg



Item Code : USF98

4'(H)X8'(W)X8'(L) Weight: 0.250 gms



Item Code : USF06

13.5'(H)X18'(W)X8'(L) Weight: 1.352 kg



Item Code : USFB288

5'(H)X4'(W)X12'(L) Weight: 0.455 gms



Item Code : USF108

0.3'(H)X4'(W)X8'(L) Weight: 0.103 gms



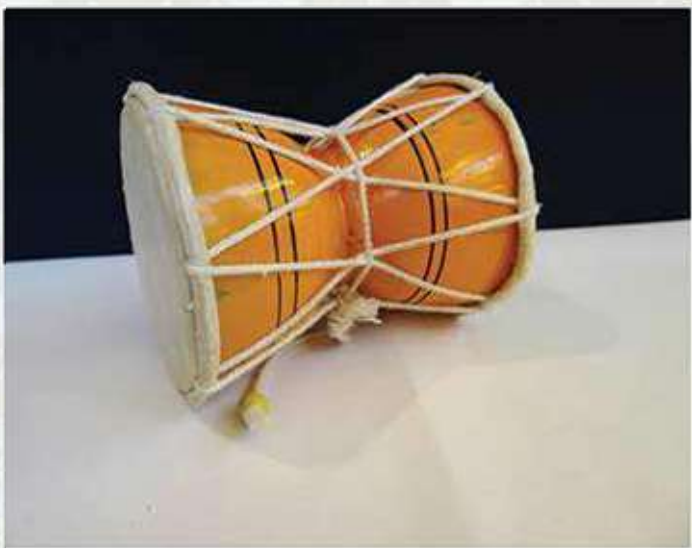
Item Code : USF75

8.5'(H)X4'(W)X12'(L) Weight: 0.675 gms



Item Code : USF70

6'(H)X4'(W)X11'(L) Weight: 0.409 gms



Item Code : USFB236

5'(H)X4'(W)X4'(L) Weight: 0.102 gms



Item Code : USF49

0.5'(H)X4'(W)X14'(L) Weight: 0.316 gms



Item Code : USFB211

6'(H)X2'(W)X2'(L) Weight: 0.116 gms



Item Code : USFB133

11'(H)X11'(W)X1'(L) Weight: 0.612 gms



Item Code : USFB334

7'(H)X4.5'(W)X4.5'(L) Weight: 0.278 gms



Item Code : USF134

7(H)X3.5(W)X3.5(L) Weight: 0.074 gms



Item Code : UCAC12

2(H)X10(W)X16(L) Weight: 0.957 gms



Item Code : UCF61

0.5(H)X0.5(W)X14(L) Weight: 0.024 gms



Item Code : UCAC5

4(H)X2.2(W)X2.2(L) Weight: 0.083 gms



Item Code : USFB320

5(H)X3(W)X9(L) Weight: 0.116 gms



Item Code : USFB241

8(H)X4(W)X1(L) Weight: 0.237 gms



Item Code : USF88

4(H)X5(W)X2(L) Weight: 0.066 gms



Item Code : UCAC42

0.5(H)X10(W)X8(L) Weight: 0.429 gms



Item Code : UCAC52

2(H)X2(W)X2(L) Weight: 0.098 gms



Item Code : UCAC52

6.5(H)X5.5(W)X5.5(L) Weight: 0.189 gms



Item Code : USF157

5.5(H)X8.5(W)X8.5(L) Weight: 0.878 gms



Item Code : USF15

2.8(H)X2.2(W)X9.5(L) Weight: 0.168 gms



Item Code : USF82

2.7(H)X6(W)X0.5(L) Weight: 0.066 gms



Item Code : USF149

3.5(H)X7.6(W)X3.5(L) Weight: 0.0364 gms



Item Code : USF160

7(H)X6(W)X15(L) Weight: 0.707 gms



Item Code : USF16

3(H)X4(W)X6.5(L) Weight: 0.152 gms



Item Code : USFB290

3(H)X2(W)X5.5(L) Weight: 0.271 gms



Item Code : USF25

8(H)X7(W)X16(L) Weight: 1.170 kg



Item Code : USF158

6(H)X8(W)X6.5(L) Weight: 0.848 gms



Item Code : UCAC14

1(H)X8.5(W)X8.5(L) Weight: 0.239 gms



Item Code : UCAC29

6.6(H)X6.6(W)X0.5(L) Weight: 0.080 gms



Item Code : USF170

7.5(H)X7(W)X6.5(L) Weight: 1.454 kg



Item Code : USF25

12.5(H)X10.2(W)X0.5(L) Weight: 0.842 gms



Item Code : UCAC15

1(H)X11.5(W)X11.5(L) Weight: 0.559 gms



Item Code : UCAC28

2.5(H)X0.5(W)X5(L) Weight: 0.094 gms



Item Code : UCAC10

2(H)X2.5(W)X18(L) Weight: 0.270 gms



Item Code : USF122

3.5(H)X1.5(W)X2(L) Weight: 0.016 gms



Item Code : USF79

6'(H)X4'(W)X2'(L) Weight: 0.145 gms



Item Code : USF80

2.5'(H)X5'(W)X5'(L) Weight: 0.155 gms



Item Code : UCAC38

5'(H)X5'(W)X5'(L) Weight: 0.349 gms



Item Code : UCAC48

15'(H)X11.5'(W)X0.5'(L) Weight: 0.893 gms



Item Code : USF151

22'(H)X4.5'(W)X2'(L) Weight: 0.200 gms



Item Code : UCAC47

17.5'(H)X9'(W)X0.5'(L) Weight: 0.659 gms



Item Code : USF28

4.5'(H)X7.5'(W)X3.5'(L) Weight: 0.332 gms



Item Code : USFB208

8.5'(H)X1.5'(W)X0.5'(L) Weight: 0.013 gms



Item Code : USF172

10'(H)X7'(W)X7'(L) Weight: 1.047 kg



Item Code : USF168

12'(H)X11'(W)X11'(L) Weight: 3.461 kg



Item Code : UCAC8

14'(H)X16.5'(W)X12'(L) Weight: 3.000 kg



Item Code : USF165

27'(H)X14'(W)X8.5'(L) Weight: 1.323 kg



Item Code : USF119

3.3'(H)X2'(W)X0.5'(L) Weight: 0.016 gms



Item Code : USF155

3'(H)X15'(W)X9.5'(L) Weight: 1.165 gms



Item Code : USF1

15'(H)X19'(W)X7.5'(L) Weight: 1.447 kg



Item Code : UCAC4

10.5'(H)X16'(W)X7'(L) Weight: 1.322 kg



Item Code : USF38

9.5'(H)X5'(W)X5'(L) Weight: 0.484 gms



Item Code : USF81

14'(H)X15'(W)X9.3'(L) Weight: 2.355 kg



Item Code : USF72

5'(H)X12'(W)X1'(L) Weight: 0.919 gms



Item Code : USF97

11'(H)X6'(W)X6'(L) Weight: 0.564 gms



Item Code : UCAC54

3.5'(H)X6'(W)X3.5'(L) Weight: 0.306 gms



Glass



Item Code : UYG38
1.5'(H)X1'(W)X1'(L) Weight: 0.026 gms



Item Code : UYG9
1.5'(H)X2'(W)X0.5'(L) Weight: 0.029 gms



Item Code : UNBG111
3'(H)X3.2'(W)X2.5'(L) Weight: 0.340 gms



Item Code : UYG56
0.5'(H)X1'(W)X1.2'(L) Weight: 0.014 gms



Item Code : UYG71
3'(H)X2'(W)X1.5'(L) Weight: 0.088 gms



Item Code : UYG57
1.7'(H)X1.1'(W)X1'(L) Weight: 0.013 gms



Item Code : UYG82
5.7'(H)X1.2'(W)X1.2'(L) Weight: 0.010 gms



Item Code : UNBG19
3.5'(H)X3.8'(W)X3.8'(L) Weight: 1.284 kg



Item Code : UNBG87
4.2'(H)X4'(W)X4'(L) Weight: 2.310 kg



Item Code : UNBG61
6.2'(H)X2.5'(W)X2.5'(L) Weight: 1.422 kg



Item Code : UNBG4
12.7'(H)X3.1'(W)X3.1'(L) Weight: 0.565 gms



Item Code : UNBG106
1'(H)X10'(W)X10'(L) Weight: 0.631 gms



Item Code : UNBG108
1'(H)X7.5'(W)X7.5'(L) Weight: 0.293 gms



Item Code : UNBG72
4.2'(H)X4'(W)X4'(L) Weight: 0.596 kg



Item Code : UNVG57
5.1'(H)X3.5'(W)X3.5'(L) Weight: 0.768 gms



Item Code : UYG102
4.7'(H)X10.7'(W)X10.7'(L) Weight: 1.518 kg



Item Code : UNBG89
3.7'(H)X3.5'(W)X3.5'(L) Weight: 2.250 kg



Item Code : UYG53
5.6'(H)X2'(W)X2'(L) Weight: 0.218 gms



Item Code : UYG43
2.5'(H)X3'(W)X1.5'(L) Weight: 1.060 gms



Bags



Item Code : JRD46
4.4'(H) X 8.3'(W) X 0.6'(L) Weight : 0.174 gms



Item Code : JBSA13
4.5'(H) X 10.2'(W) X 1.5'(L) Weight : 0.199 gms



Item Code : JJRS54
8'(H) X 2.5'(W) Weight : 0.029 gms



Item Code : JSRJ71
14'(H) X 3'(W) Weight : 0.090 gms



Item Code : JBSA6
10'(H) X 13'(W) X 0.3'(L) Weight : 0.482 gms



Item Code : JBSA16
7'(H) X 11'(W) X 2.5'(L) Weight : 0.303 gms



Item Code : JDMA19
8'(H) X 7'(W) X 7'(L) Weight : 0.717 kg



Item Code : JDAC240
6.5'(H) X 6'(W) X 2.5'(L) Weight : 0.494 gms



Item Code : JRD10
8.5'(H) X 7'(W) X 2'(L) Weight : 0.164 gms



Item Code : GBSA17
5.5'(H) X 3.5'(W) X 1.5'(L) Weight : 0.69 gms



Item Code : JDAC1
19'(H) X 10'(W) X 4'(L) Weight : 0.798 gms



Item Code : JDAC5
4.5'(H) X 9'(W) X 2.5'(L) Weight : 0.316 gms



Jewellery

Item Code : JJRS392
8"(H) X 1.5"(W) Weight : 0.016 gms



Item Code : JSRJ90
1.5"(H) X 1"(W) Weight : 0.019 gms



Item Code : JSRJ26
2"(H) X 1"(W) Weight : 0.016 gms



Item Code : JSRJ68
15"(H) X 2"(W) Weight : 0.140 gms



Item Code : JSRJ64
7.5"(H) X 2"(W) Weight : 0.121 gms



Item Code : JSNJ132
3.1"(H) X 1"(W) Weight : 0.018 gms



Item Code : JSRJ90
2"(H) X 1"(W) Weight : 0.030 gms



Item Code : JJRS391
10.5"(H) X 1.5"(W) Weight : 0.055 gms



Item Code : JJRS54
8"(H) X 2.5"(W) Weight : 0.029 gms



Item Code : JSRJ71
14"(H) X 3"(W) Weight : 0.090 gms



Item Code : JJRS57
11"(H) X 0.5"(W) Weight : 0.019 gms



Item Code : JSRJ94
2"(H) X 2"(W) Weight : 0.021 gms



Item Code : JLB118
2"(H) X 1"(W) Weight : 0.029 gms



Item Code : JLB105
1"(H) X 1"(W) Weight : 0.015 gms



Item Code : JLB125
0.5"(H) X 0.5"(W) Weight : 0.010 gms



Item Code : JLB5
1"(H) X 0.5"(W) Weight : 0.010 gms



Item Code : JLB101
1"(H) X 0.6"(W) Weight : 0.010 gms



Item Code : JLB105
2.5"(H) X 0.6"(W) Weight : 0.025 gms



Item Code : JLB127
2.5"(H) X 0.7"(W) Weight : 0.018 gms



Item Code : JLB5
1"(H) X 0.5"(W) Weight : 0.006 gms



Item Code : JLB125
0.5"(H) X 0.5"(W) Weight : 0.008 gms



Item Code : JLB4

1'(H)X0.6'(W) Weight: 0.004 gms



Item Code : JJRS59

7'(H)X3'(W) Weight: 0.023 gms



Item Code : JSRJ69

9'(H)X5'(W) Weight: 0.071 gms



Item Code : JSRJ65

10'(H)X3'(W) Weight: 0.053 gms



Item Code : JSRJ74

2'(H)X1.3'(W) Weight: 0.025 gms



Item Code : JSRJ276

2'(H)X1.7'(W) Weight: 0.015 gms



Item Code : JJRS54

7'(H)X2.5'(W) Weight: 0.031 gms



Item Code : JJRS45

1'(H)X0.5'(W) Weight: 0.004 gms



Item Code : JSRJ66

11'(H)X3.5'(W) Weight: 0.086 gms



Item Code : JSRJ103

2.5'(H)X1.7'(W) Weight: 0.028 gms



Item Code : JSRJ81

2'(H)X1.3'(W) Weight: 0.023 gms



Item Code : JSRJ92

1.5'(H)X1.1'(W) Weight: 0.012 gms



Item Code : JSRJ71

12'(H)X4'(W) Weight: 0.094 gms



Item Code : JSRJ68

15'(H)X2.5'(W) Weight: 0.124 gms



Item Code : JSRJ15

9'(H)X1.5'(W) Weight: 0.055 gms



Item Code : JSRJ64

8'(H)X3'(W) Weight: 0.124 gms



Item Code : JSRJ94

2'(H)X1.6'(W) Weight: 0.008 gms



Item Code : JSRJ90

2'(H)X1'(W) Weight: 0.021 gms



Item Code : JSRJ73

2'(H)X1'(W) Weight: 0.019 gms



Item Code : JSRJ83

2'(H)X1.2'(W) Weight: 0.020 gms



Item Code : JSRJ78

3'(H)X1'(W) Weight: 0.018 gms



Item Code : JPJ115

11'(H)X2'(W) Weight: 0.091 gms



Item Code : JSRJ63

1'(H)X4'(W) Weight: 0.223 gms



Item Code : JSRJ116

2'(H)X1'(W) Weight: 0.020 gms



Item Code : JSRJ93

2'(H)X1'(W) Weight: 0.018 gms



Item Code : JSNJ132

3"(H)X1"(W) Weight: 0.017 gms



Item Code : JKGJ27

1.5"(H)X0.7"(W) Weight: 0.013 gms



Item Code : JPJ55

2.5"(H)X1.5"(W) Weight: 0.025 gms



Item Code : JJRS192

1.5"(H)X0.5"(W) Weight: 0.007 gms



Item Code : MLP51

10"(H)X2"(W) Weight: 0.50 gms



Item Code : JSNJ154

2"(H)X2"(W) Weight: 0.010 gms



Item Code : JSNJ119

3"(H)X1"(W) Weight: 0.020 gms



Item Code : JPJ254

2.5"(H)X1.5"(W) Weight: 0.020 gms



Item Code : JJRS321

2"(H)X0.5"(W) Weight: 0.018 gms



Item Code : JJRS388

1.2"(H)X0.8"(W) Weight: 0.011 gms



Item Code : JJRS407

1"(H)X0.6"(W) Weight: 0.009 gms



Item Code : JJRS31

0.7"(H)X1.1"(W) Weight: 0.012 gms



Item Code : JSNJ103

4"(H)X1.5"(W) Weight: 0.024 gms



Item Code : JSRJ114

3"(H)X2.2"(W) Weight: 0.032 gms



Item Code : JJRS224

2.7"(H)X0.3"(W) Weight: 0.022 gms



Item Code : JJRS90

2"(H)X1"(W) Weight: 0.015 gms



Item Code : JSRJ82

3"(H)X0.7"(W) Weight: 0.025 gms



Item Code : JSRJ112

2.5"(H)X1"(W) Weight: 0.019 gms



Item Code : JJRS399

2"(H)X0.7"(W) Weight: 0.007 gms



Item Code : JJRS396

1.5"(H)X0.7"(W) Weight: 0.009 gms



Item Code : JSRJ79

2"(H)X1"(W) Weight: 0.024 gms



Item Code : JKGJ226

2"(H)X1"(W) Weight: 0.012 gms



Item Code : JJRS398

2.6"(H)X0.5"(W) Weight: 0.011 gms



Item Code : JJRS389

1"(H)X1"(W) Weight: 0.012 gms





kitchenware



Item Code : KFE94

4'(H)X6.2'(D)X8'(L) Weight : 0.979 gms



Item Code : KNCI206

4.3'(H)X10.5'(D) Weight: 0.928 gms



Item Code : KNCI207

3.5'(H)X9'(D) Weight: 0.650 gms



Item Code : KNCI249

3.5'(H)X5'(D) Weight: 1.488 gms



Item Code : KFE53

2.4'(H)X3'(D) Weight: 1.28 gms



Item Code : KNCI254

3'(H)X3'(D) Weight: 1.69 kg



Item Code : KNCI254

3'(H)X4.5'(D) Weight: 1.69 gms



Item Code : KNCI245

2.8'(H)X4.5'(W)X3.5'(D) Weight: 1.83 gms



Item Code : KNCI245

2.5'(H)X4'(D) Weight: 1.39 gms



Item Code : KFE40

3.5'(H)X2.5'(D) Weight: 1.35 gms



Item Code : KNCI249

3'(H)X3'(D) Weight: 1.28 gms



Item Code : KNCI202

2'(H)X5'(D) Weight: 0.344 gms



Item Code : KNCI242

3'(H)X4'(D) Weight: 0.323 gms



Item Code : KFE59

5.7'(H)X3.5'(D) Weight: 0.488 gms



Item Code : KFE107

4'(H)X3'(W) Weight: 0.238 gms



Item Code : KNCI235

5'(H)X3.5'(D) Weight: 0.498 gms



Item Code : KNCI258

4'(H)X3'(D) Weight: 0.353 gms



Item Code : KNCI258

4'(H)X3'(D) Weight: 0.286 gms



Item Code : KNCI258

4'(H)X3'(D) Weight: 0.347 gms



Item Code : KNCI241

3'(H)X4.5'(D) Weight: 0.377 gms



Item Code : KNCI236

3.5"(H)X4"(D) Weight: 0.457 gms



Item Code : KNCI242

2"(H)X4.5"(W) Weight: 0.332 gms



Item Code : KFE103

9"(H)X3"(W)X6"(L) Weight: 1.27 gms



Item Code : KNCI211

3.5"(H)X3.5"(D) Weight: 0.894 gms



Item Code : KNCI237

6"(H)X1.5X10.5"(W)X9"(D) Weight: 4.21 kg



Item Code : KNCI246

3.6"(H)X4"(W) Weight: 1.21 gms



Item Code : KNCI246

3.6"(H)X4"(W) Weight: 1.21 gms



Item Code : KNCI246

3"(H)X3"(D) Weight: 1.11 gms



Item Code : KFE67

4.2"(H)X3.5"(D) Weight: 0.319 gms



Item Code : KNCI256

4.3"(H)X3.5"(D) Weight: 0.302 gms



Item Code : KNCI236

3.6"(H)X5.5"(W) Weight: 0.469 gms



Item Code : KNCI235

5.5"(H)X3"(D) Weight: 0.455 gms



Item Code : KNCI259

5.4"(H)X4"(W) Weight: 0.565 gms



Item Code : KNCI256

4"(H)X3.2"(D) Weight: 0.312 gms



Item Code : KNCI242

2"(H)X6"(W) Weight: 0.332 gms



Item Code : KNCI235

5.9"(H)X4.5"(W) Weight: 0.455 gms



Item Code : KNCI247

3"(H)X3"(D) Weight: 1.45 gms



Item Code : KNCI245

2.8"(H)X4.3"(W) Weight: 1.83 gms



Item Code : KNCI245

1.5"(H)X5"(W) Weight: 1.39 gms



Item Code : KNCI245

1.5"(H)X5"(W) Weight: 1.39 gms



Item Code : KNCI210

3.1"(H)X6.5"(D) Weight: 1.12 kg



Item Code : KNCI252

4.5"(H)X4"(W)X7"(L) Weight: 0.824 gms



Item Code : KNCI250

2.5"(H)X8.5"(W) Weight: 1.37 gms



Item Code : KNCI252

4.5"(H)X7"(W) Weight: 0.824 gms



Item Code : KNCI237

3.25"(H)X6.9"(W) Weight: 1.12 gms



Item Code : KNCI235

5.9"(H) X 4.8"(W) Weight: 0.455 gms



Item Code : KNCI245

2"(H) X 4"(W) Weight: 1.98 gms



Item Code : KNCI132

7"(H) X 3"(W) Weight:



Item Code : KNCI235

4.8"(H) X 5"(W) Weight: 0.495 gms



Item Code : KFCI247

3"(H) X 3"(D) Weight: 1.39 gms



Item Code : KNCI253

2.2"(H) X 2.5"(D) Weight: 0.745 gms



Item Code : KNCI256

4"(H) X 3"(W) Weight: 0.347 gms



Item Code : KNCI246

3"(H) X 4"(W) Weight: 1.13 kg



Item Code : KNCI246

2.5"(H) X 4"(W) Weight: 1.08 kg



Item Code : KFE58

3.5"(H) X 3"(D) Weight: 0.245 gms



Item Code : KFE112

3"(H) X 4"(W) X 5"(L) Weight: 0.196 gms



Item Code : KNCI203

2"(H) X 4"(D) Weight: 0.189 gms



Item Code : KNCI203

2.5"(H) X 4"(W) Weight: 0.189 gms



Item Code : KNCI203

2.5"(H) X 4"(W) Weight: 0.189 gms



Item Code : KFE79

9"(H) X 7.5"(W) X 7.3"(L) Weight: 2.33 kg



Item Code : KFE80

5.4"(H) X 4.8"(W) X 4.8"(L) Weight: 0.740 gms



Item Code : KNCI200

1"(H) X 10"(D) Weight: 0.675 gms



Item Code : KFE74

3.5"(H) X 4"(W) Weight: 0.233 gms



Item Code : KFE112

3"(H) X 5.5"(W) Weight: 0.230 gms



Item Code : KFE112

3"(H) X 5.5"(W) Weight: 0.230 gms



Item Code : KFE112

3"(H) X 2.2"(W) Weight: 0.139 gms



Item Code : KNCI256

4"(H) X 3.5"(W) Weight: 0.275 gms



Item Code : KNCI210

3"(H) X 5.8"(W) Weight: 1.14 kg



Item Code : KNCI210

3"(H) X 5.8"(W) Weight: 1.14 kg



Item Code : KNCI248

3.5"(H) X 3"(D) Weight: 1.76 kg



Item Code : KNCI258

5'(H)X3.4'(D) Weight: 0.354 gms



Item Code : KNCI240

3.2'(H)X3.8'(D) Weight: 0.266 gms



Item Code : KNCI258

5'(H)X4'(W) Weight: 0.366 gms



Item Code : KFE42

2.8'(H)X2'(D) Weight: 0.50 gms



Item Code : KFE108

2'(H)X3.5'(W)X10'(L) Weight: 0.400 gms



Item Code : KFE76

3.2'(H)X3.5'(W)X12'(L) Weight: 1.20 kg



Item Code : KFE75

4.3'(H)X6.5'(D) Weight: 0.964 gms



Item Code : KFE81

6'(H)X2.5'(D) Weight: 0.248 gms



Item Code : KFE50

3'(H)X2'(W)X5'(L) Weight: 0.280 gms



Item Code : KFE116

6.5'(H)X2.5'(W)X8.8'(L) Weight: 0.470 gms



Item Code : KFE46

3.5'(H)X4'(D) Weight: 0.340 gms



Item Code : KFE70

10.5'(H)X5.8'(W) Weight: 0.972 gms



Item Code : KFE118

2.5'(H)X2.8'(D) Weight: 0.68 gms



Item Code : KFE125

7'(H)X5.5'(D) Weight: 0.963 gms



Item Code : KFE97

2.5'(H)X7'(D) Weight: 1.54 kg



Item Code : KFE111

8'(H)X3.2'(W)X5'(L) Weight: 1.28 kg



Item Code : KFE113

4.5'(H)X6.5'(W)X8.3'(L) Weight: 0.710 gms



Item Code : KFE106

8.5'(H)X5'(D) Weight: 1.14 kg



Item Code : KFE119

5'(H)X5.5'(D) Weight: 0.188 gms



Item Code : KFE43

7'(H)X2.5'(W)X2.5'(L) Weight: 0.206 gms



Item Code : KFE101

2.8'(H)X1'(W)X2.2'(L) Weight: 0.88 gms



Item Code : KFE118

1.5'(H)X4'(W)X4'(L) Weight: 0.68 gms



Item Code : KFE49

3.2'(H)X2.3'(W)X6'(L) Weight: 0.390 gms



Item Code : KFE108

7'(H)X3'(D) Weight: 0.296 gms



Item Code : KFE61

7'(H)X5.5'(W)X10.5'(L) Weight: 1.99 kg



Stationary



Item Code : JNP15
14"(H) X 4"(W) X 4"(L) Weight : 0.251 gms



Item Code : UA04
8.2"(H) X 7.7"(W) X 0.5"(L) Weight : 0.278 gms



Item Code : JNP7
4"(H) X 4.2"(W) X 4.2"(L) Weight : 0.160 gms



Item Code : JGHU82
9"(H) X 10"(W) X 1.5"(L) Weight : 0.73 gms



Item Code : JGHU82
8.5"(H) X 8.5"(W) X 1.5"(L) Weight : 0.100 gms



Item Code : JGHU74
8"(H) X 5.6"(W) X 0.5"(L) Weight : 0.211 gms



Item Code : JGHU95
7.3"(H) X 3.5"(W) X 0.1"(L) Weight : 0.13 gms



Item Code : JGHU91
9.2"(H) X 7.2"(W) X 0.8"(L) Weight : 0.409 gms



Item Code : JGHU65
6.2"(H) X 4.3"(W) X 0.3"(L) Weight : 0.76 gms



Item Code : JGHU81
8"(H) X 6"(W) X 0.5"(L) Weight : 0.198 gms



Item Code : JGHU88
7.3"(H) X 3.2"(W) X 0.5"(L) Weight : 0.11 gms



Item Code : JGHU95
7.4"(H) X 3.4"(W) X 0.1"(L) Weight : 0.11 gms



Item Code : JGHU62
2.1"(H) X 9"(W) X 5.2"(L) Weight : 0.370 gms



Item Code : JGHU80
8"(H) X 8"(W) X 0.1"(L) Weight : 0.26 gms



Item Code : JGHU95
7.5"(H) X 3.3"(W) X 0.1"(L) Weight : 0.65 gms



Item Code : JKHP13
11"(H) X 7.2"(W) X 7.5"(L) Weight : 0.480 gms



Item Code : JGHU37
7.3"(H) X 5.4"(W) X 1"(L) Weight : 0.241 gms



Item Code : JGHU76
9"(H) X 7.2"(W) X 0.8"(L) Weight : 0.415 gms



Item Code : JNP9
9"(H) X 7.5"(W) X 0.8"(L) Weight : 0.320 gms



NAMASTE INDIA

...an initiative to support Indian handicrafts